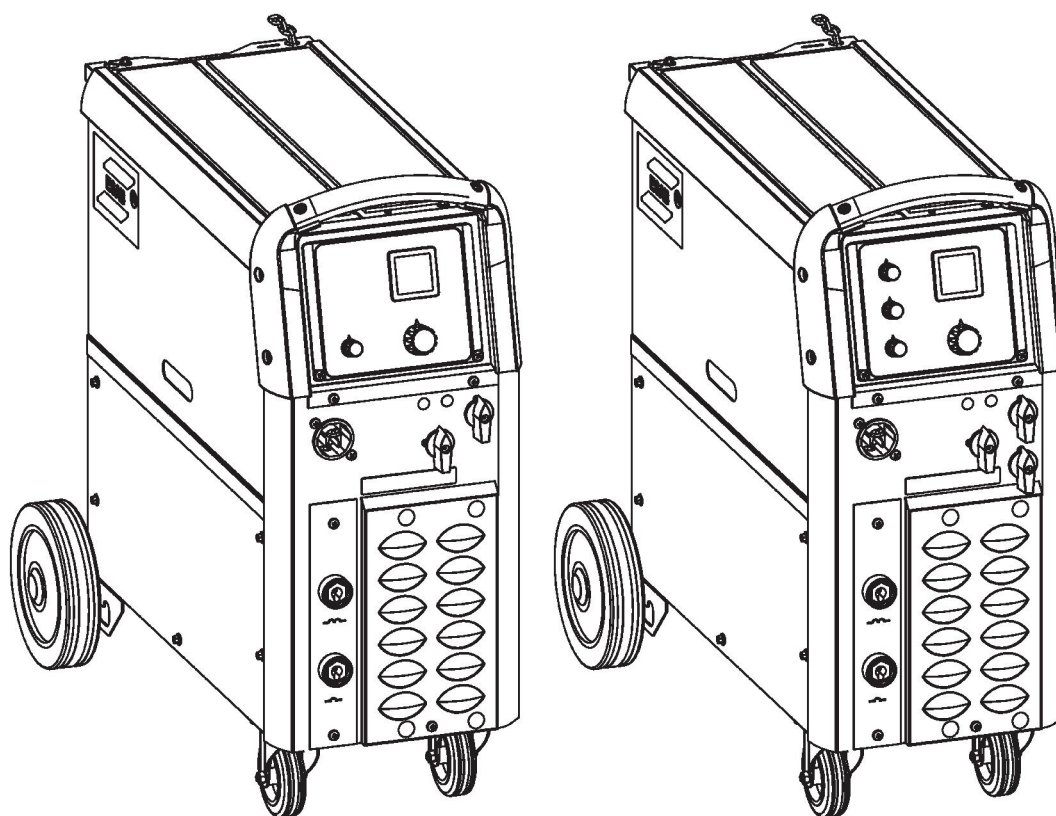


Origo™

Mig C280 PRO, Mig C340 PRO



Spare parts list

| Ordering no. | Product | |
|---------------------|--------------------------|---|
| 0349 302 889 | Origo™ Mig C280 PRO | 400-415 V, 3-50 Hz |
| 0349 302 844 | Origo™ Mig C280 PRO | 230/400-415/415/500V, 3-50 Hz; 230/440-460V, 3-60 Hz |
| 0349 302 890 | Origo™ Mig C280 PRO 4WD | 400-415 V, 3-50 Hz |
| 0349 302 612 | Origo™ Mig C280 PRO 4 WD | 230/400-415/415/500V, 3-50 Hz; 230/440-460V, 3-60 Hz |
| 0349 302 452 | Origo™ Mig C340 PRO | 400-415 V, 3-50 Hz |
| 0349 302 483 | Origo™ Mig C340 PRO | 400-415 V, 3-50 Hz |
| 0349 302 484 | Origo™ Mig C340 PRO 4 WD | 400-415 V, 3-50 Hz |
| 0349 302 485 | Origo™ Mig C340 PRO 4 WD | 230/400-415/415/500V, 3-50 Hz; 230/440-460V, 3-60 Hz |
| 0349 312 510 | Origo™ Mig C280 PRO | 400-415 V, 3-50 Hz, with digital instrument |
| 0319 312 540 | Origo™ Mig C280 PRO | 230/400-415/415/500V, 3-50 Hz; 230/440-460V, 3-60 Hz, with digital instrument |
| 0349 312 520 | Origo™ Mig C280 PRO 4 WD | 230/400-415/415/500V, 3-50 Hz; 230/440-460V, 3-60 Hz |
| 0349312 530 | Origo™ MigC280 PRO 4 WD | 230/400-415/500V 3~50Hz |
| 0349 312 550 | Origo™ MigC340 PRO | 230/400-415/500V 3~50Hz |
| 0349 312 560 | Origo™ Mig C340 PRO | 230/400-415/500V 3~50Hz |
| 0349 310 830 | Origo™ Mig C340PRO 4 WD | 230/400-415/500V 3~50Hz |
| 0349 312 570 | Origo™ MigC340 PRO 4 WD | 230/400-415/500V 3~50Hz |

Spare parts may be ordered through your nearest ESAB dealer, see the back cover of this document. When ordering, please state product type, serial number, denominations and ordering numbers according to the spare parts list. This facilitates dispatch and ensures correct delivery.

Maintenance and repair work should be performed by an experienced person, and electrical work only by a trained electrician. Use only recommended spare parts.

For accessories to the product, see the instruction manual.

TABLE OF CONTENTS

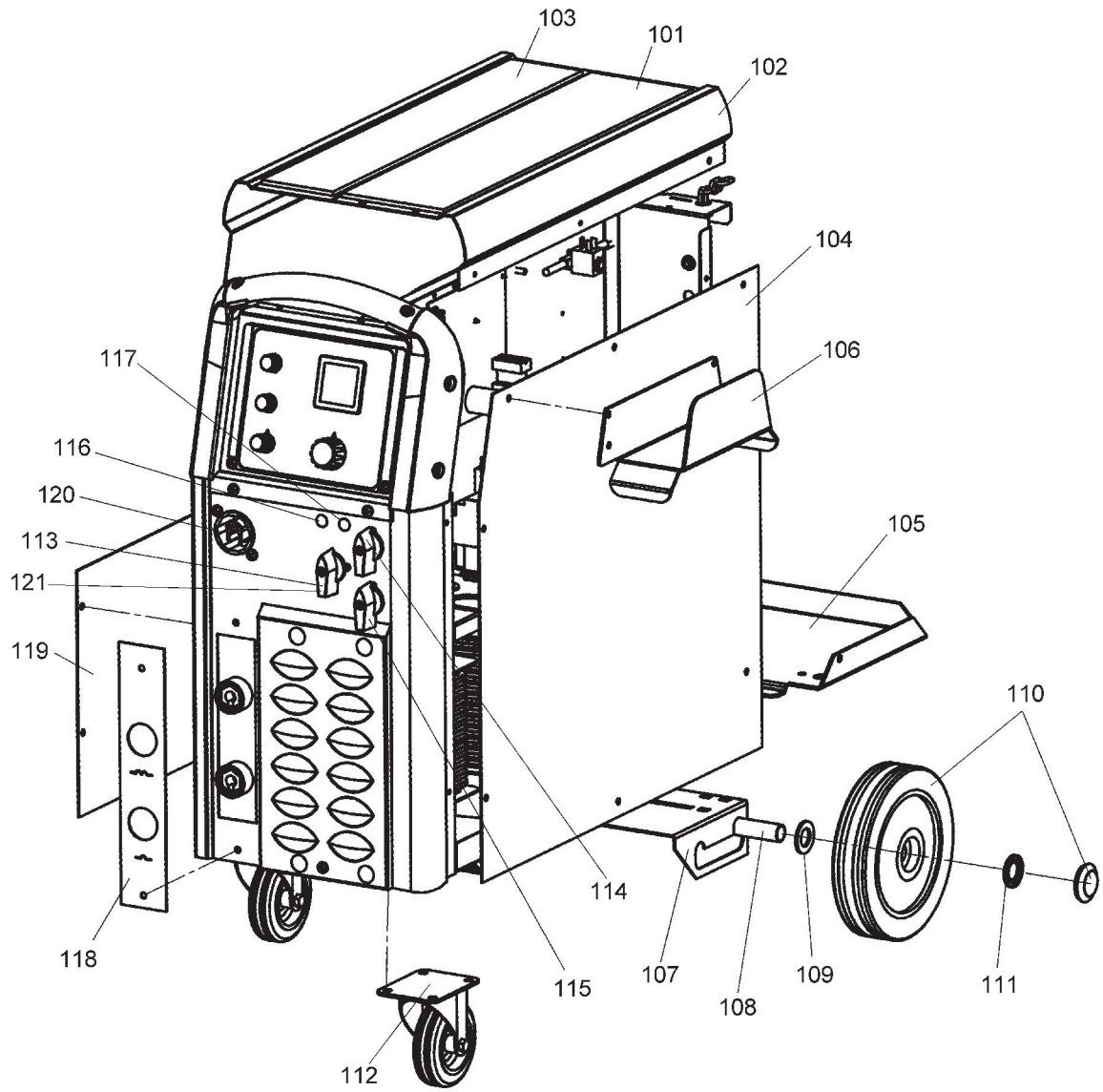
SPARE PARTS **4**

WEAR PARTS..... **24**

SPARE PARTS

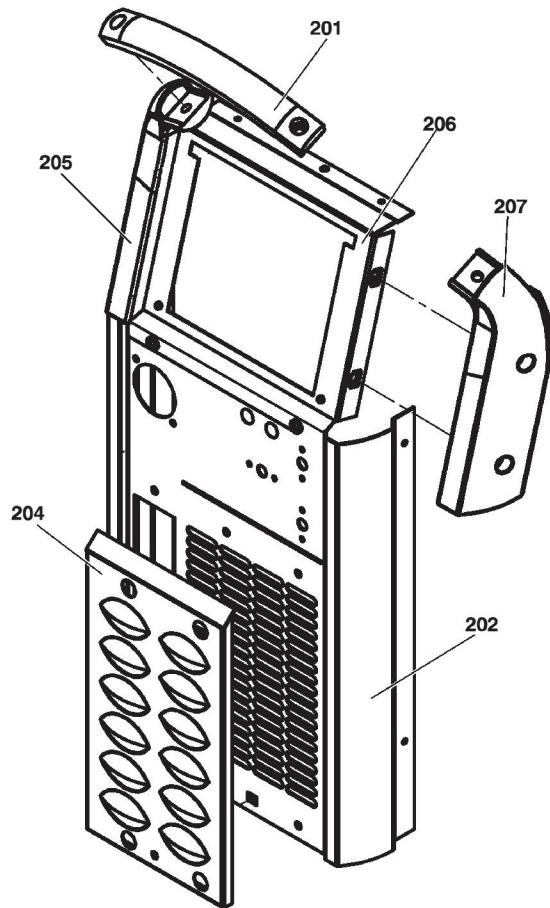
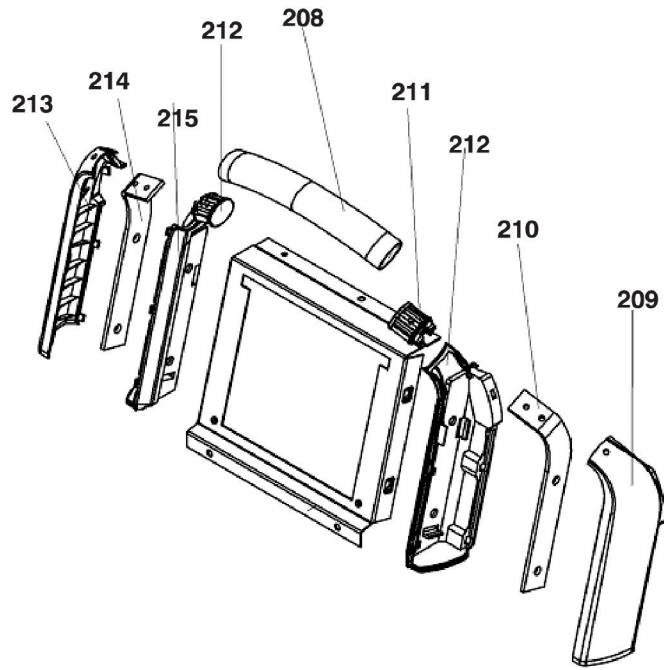
C = Component designation in the circuit diagram

| Item | Qty C280 | Qty C340 | Ordering no. | Denomination | Notes | C |
|------|-------------|-------------|--------------|----------------------|---|-----|
| 101 | 1 | 1 | 0349 302 450 | Rubber mat | | |
| 102 | 1 | 1 | 0349 302 401 | Cover | | |
| 103 | 1 | 1 | 0349 302 449 | Rubber mat | | |
| 104 | 1 | 1 | 0349 302 375 | Side panel with text | Right | |
| 105 | 1 | 1 | 0349 302 453 | Shelf | | |
| 106 | 1 | 1 | | Holder | | |
| 107 | 1 | 1 | 0349 302 318 | Clamp | | |
| 108 | 1 | 1 | 0349 480 311 | Shaft | | |
| 109 | 2 | 2 | 0349 481 044 | Washer | Ø 21 mm (0.827 in.) | |
| 110 | 2 | 2 | 0455 457 001 | Wheel | Ø 200 mm (7.874 in.) | |
| 111 | 2 | 2 | 0192 859 126 | Locking washer | Ø 200 mm (7.874 in.) | |
| 112 | 2 | 2 | 0455 467 001 | Link wheel | Ø 100 mm (3.937 in.) | |
| 113 | 1 | 1 | 0349 302 305 | Switch | valid up to serial no.: C280: 627-809-7344 C340: 627-808-9628 | QF1 |
| | 1 | 1 | 0349 313 201 | Switch | | QF1 |
| 114 | 1 | 1 | 0193 945 001 | Switch | 10 step | SA1 |
| 115 | - | 1 | 0193 942 001 | Switch | 4 step | SA2 |
| 116 | - | 1 | 0369 733 002 | Signal lamp | Orange | HL2 |
| | 1 | - | 0369 733 005 | Signal lamp | Orange | V7 |
| 117 | 1 | 1 | 0369 733 007 | Signal lamp | | HL1 |
| 118 | 1 | 1 | 0349 302 378 | OKC plate | | |
| 119 | 1 | 1 | 0349 303 759 | Side panel | | |
| 120 | - | 1 | 0455 890 881 | Feeder mechanism | | |
| | 1 | - | 0455 890 882 | Feeder mechanism | | |
| | - | 1 | 0459 000 883 | Feeder mechanism | (4WD) | |
| | 1 | - | 0459 000 884 | Feeder mechanism | (4WD) | |
| 121 | 1 | 1 | 0349 311 632 | Knob | | |



SPARE PARTS

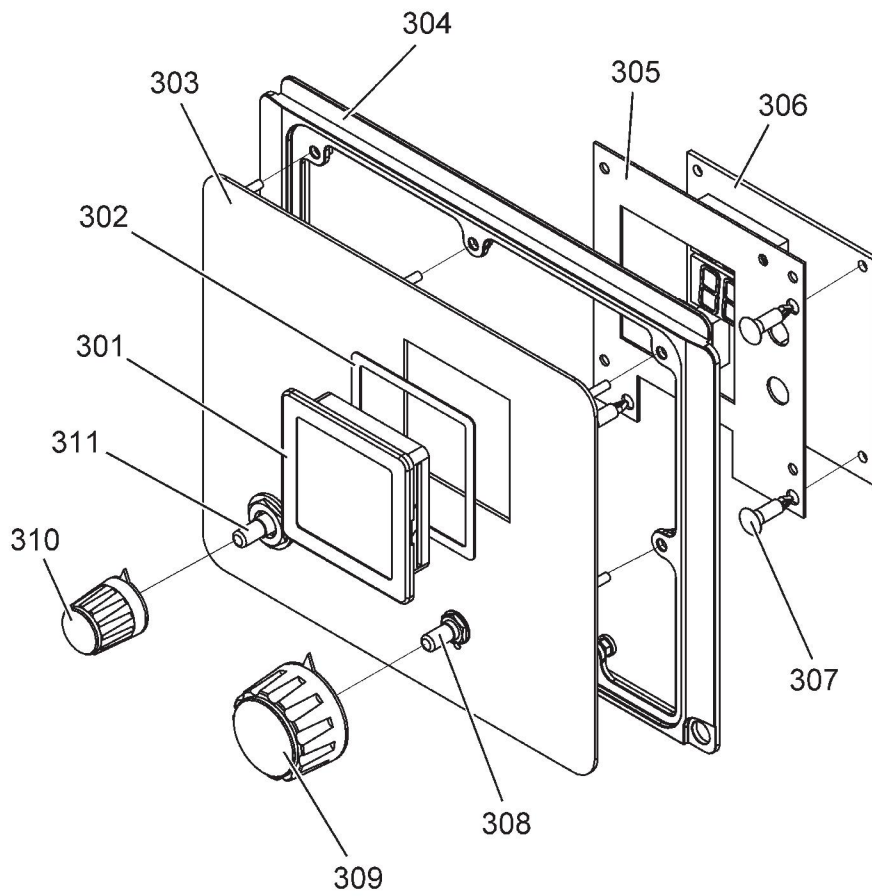
| Item | Qty C280 | Qty C340 | Ordering no. | Denomination | Notes |
|------|-------------|-------------|--------------|-----------------------------|--|
| 201 | 1 | 1 | 0349 302 325 | Upper front panel | |
| 202 | - | 1 | 0349 302 324 | Lower front plate with text | |
| | 1 | - | 0349 302 884 | Lower front plate with text | |
| 204 | 1 | 1 | 0349 302 326 | Grill | |
| 205 | 1 | 1 | 0349 302 282 | Left corner | |
| 206 | 1 | 1 | 0349 302 327 | Handle | Valid for serial no.: xxx-5xx-xxxx to xxx-908-xxxx |
| 207 | 1 | 1 | 0349 302 283 | Right corner | |
| 208 | 1 | 1 | 0349 310 964 | Handle | |
| 209 | 1 | 1 | 0349 311 034 | Cover right | |
| 210 | 1 | 1 | 0349 311 035 | Bracket right | |
| 211 | 1 | 1 | 0349 311 033 | Base tight | Valid for serial no.: xxx-909-xxxx to xxx-953-xxxx |
| 212 | 2 | 2 | 0349 311 039 | Reduction insert | from xxx-0xx-xxxx |
| 213 | 1 | 1 | 0349 311 037 | Cover left | |
| 214 | 1 | 1 | 0349 311 038 | Bracket left | |
| 215 | 1 | 1 | 0349 311 036 | Base left | |



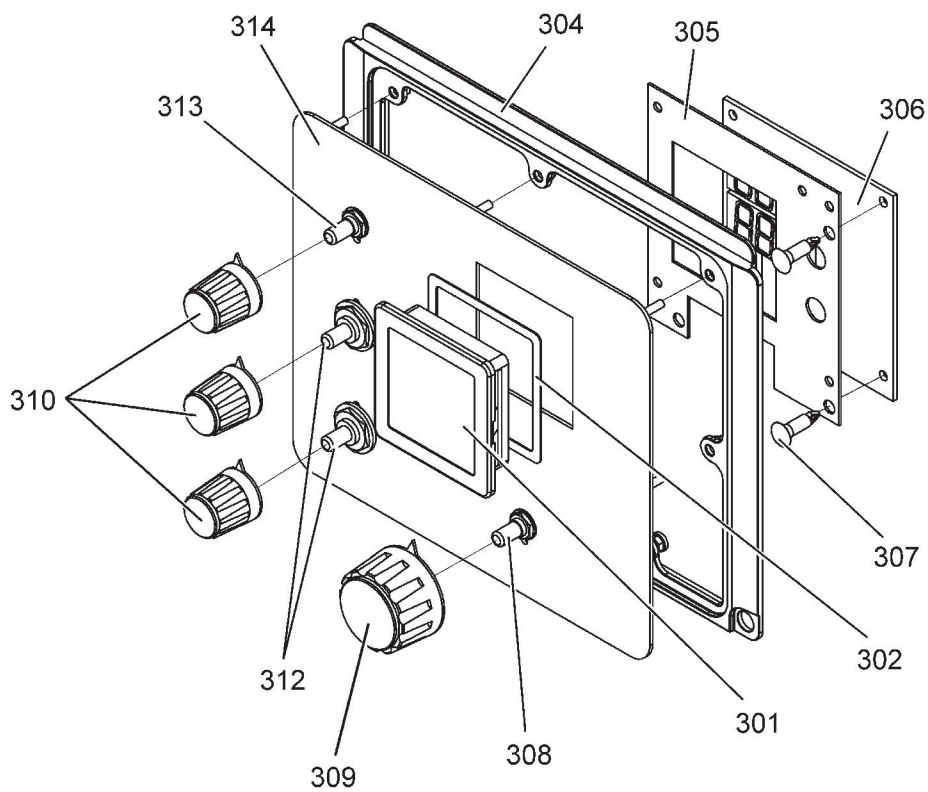
C = Component designation in the circuit diagram

| Item | Qty C280 | Qty C340 | Ordering no. | Denomination | Notes | C |
|------|-------------|-------------|--------------|------------------|--|-----------|
| 301 | 1 | 1 | 0455 172 001 | Glass | | |
| 302 | 1 | 1 | 0455 174 001 | Seal | | |
| 303 | 1 | - | 0349 302 330 | Panel | | |
| 304 | 1 | 1 | 0459 118 002 | Protection frame | | |
| 305 | 1 | 1 | 0349 302 287 | Plate | | |
| 306 | | | | Circuit-board | Included in digital instrument (A) | AP2 |
| | 1 | 1 | 0349 313 036 | | Valid up to serial no: xxx-136-xxxx | |
| | 1 | 1 | 0349 312 631 | | Valid from serial no: xxx-137-xxxx | |
| 307 | 3 | 3 | 0455 226 004 | Spacer | | |
| 308 | 1 | 1 | 0349 303 074 | Potentiometer | | RP1 |
| 309 | 1 | 1 | 0321 475 882 | Knob | | |
| 310 | 1 | 3 | 0321 475 881 | Knob | | |
| 311 | 1 | - | 0349 303 232 | Potentiometer | | RP2 |
| 312 | - | 2 | 0349 303 103 | Switch | | S1, S2 |
| 313 | - | 1 | 0349 303 075 | Potentiometer | | RP2 |
| 314 | - | 1 | 0349 302 332 | Panel | | |
| - | 1 | - | 0349 302 322 | MMC module | Contains items 301-305, 307-314 | |
| - | - | 1 | 0349 302 331 | MMC module | Contains items 301-305, 307-314 | |

Mig C280 PRO

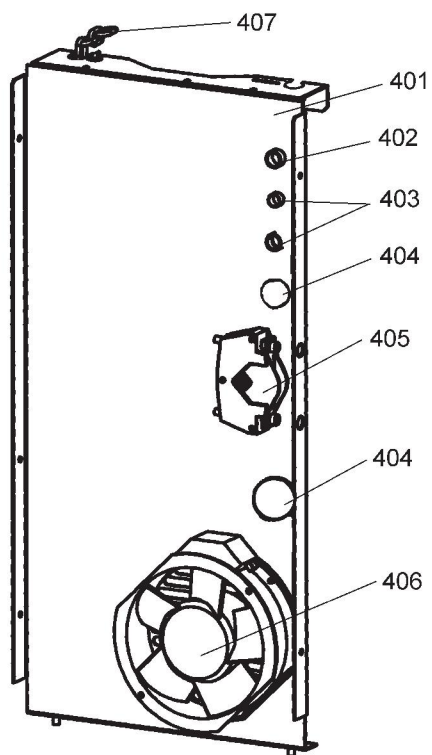


Mig C340 PRO



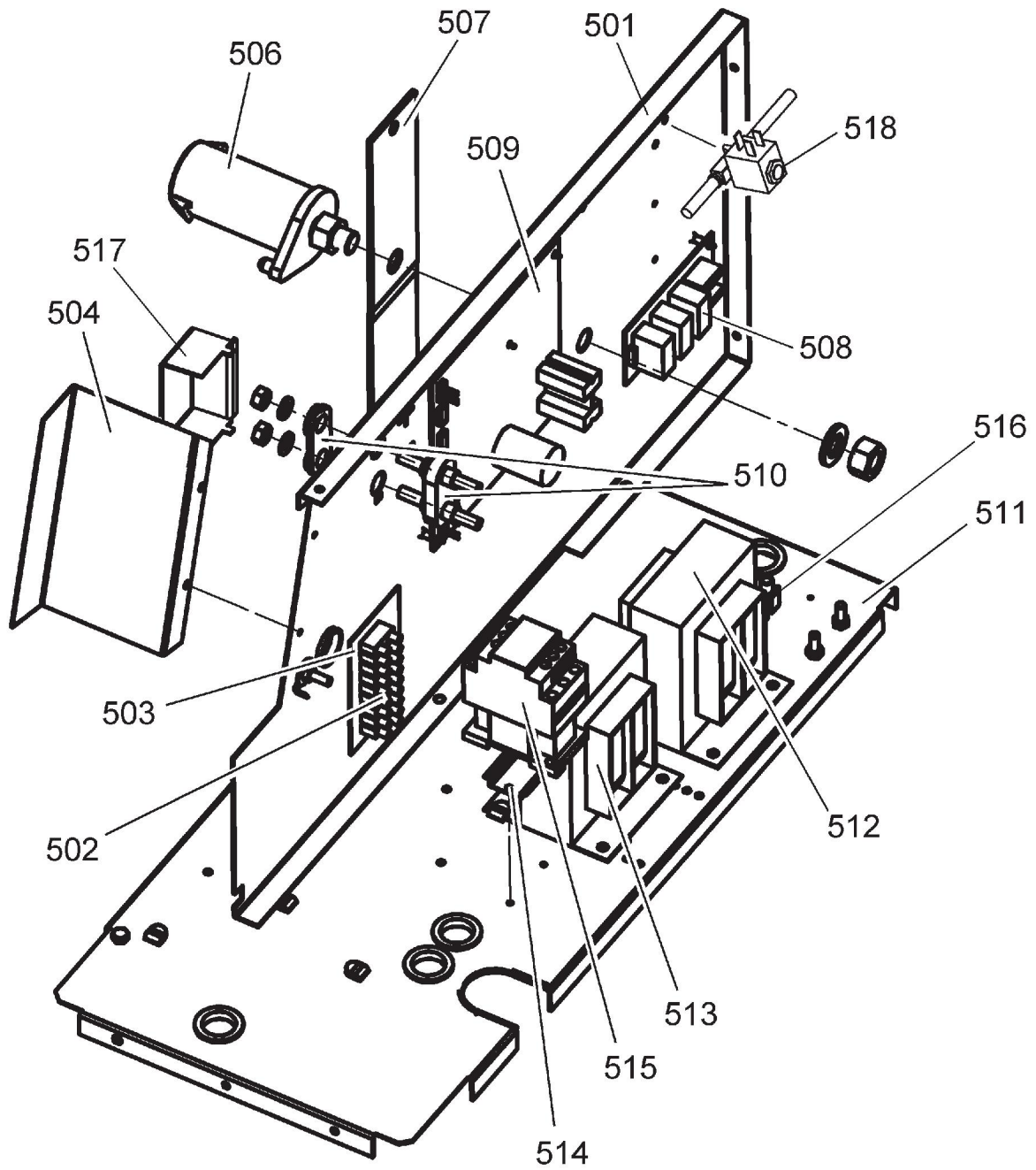
C = Component designation in the circuit diagram

| Item | Qty C280 | Qty C340 | Ordering no. | Denomination | Notes | C |
|------|-------------|-------------|--------------|----------------|---------------------|-----|
| 401 | 1 | 1 | 0349 302 321 | Rear panel | | |
| 402 | 1 | 1 | 0349 490 192 | Bushing | | |
| 403 | 2 | 2 | | Blind plug | Ø 13 mm (0.512 in.) | |
| 404 | 2 | 2 | | Blind plug | Ø 30 mm (1.181 in.) | |
| 405 | 1 | 1 | 0469 950 880 | Cable inlet | | |
| 406 | 1 | 1 | 0349 483 510 | Fan | | EV1 |
| 407 | 1 | 1 | 0321 173 001 | Securing chain | | |



C = Component designation in the circuit diagram

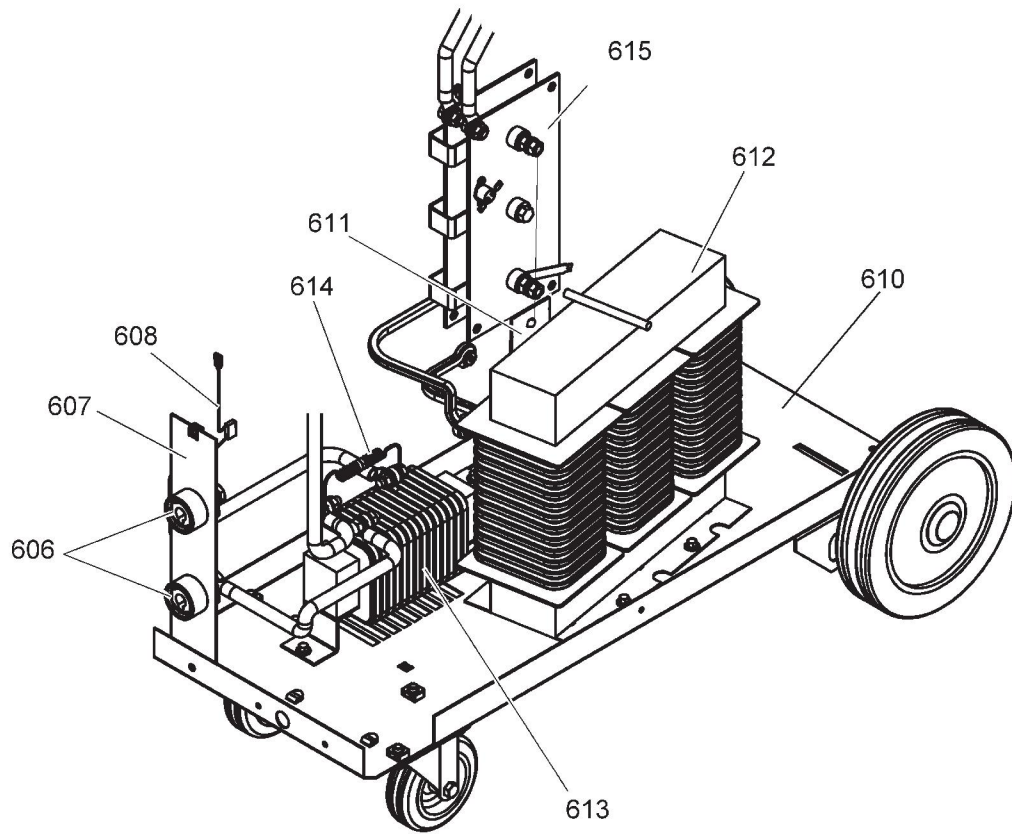
| Item | Qty C280 400-415 V | Qty C280 230-500 V | Qty C340 400-415 V | Qty C340 230-500 V | Ordering no. | Denomination | Notes | C |
|------|--------------------------|--------------------------|--------------------------|--------------------------|--------------|-------------------------|-------|-----|
| 501 | 1 | 1 | 1 | 1 | 0349 302 366 | Intermediate plate | | |
| 502 | 1 | 1 | 1 | 1 | 0349 303 841 | Terminal | 3/4 | XT2 |
| 503 | 1 | - | 1 | - | 0349 491 160 | Plate | | |
| | - | 1 | - | 1 | 0349 491 163 | Plate | | |
| 504 | 1 | 1 | 1 | 1 | 0349 302 367 | Cover | | |
| 506 | 1 | 1 | 1 | 1 | 0146 967 881 | Brake hub | | |
| 507 | 1 | 1 | 1 | 1 | 0469 524 001 | Support | | |
| 508 | 1 | 1 | - | - | 0486 364 880 | EMC filter | | AP3 |
| 509 | - | - | 1 | 1 | 0487 162 880 | Circuit board | | AP1 |
| | 1 | 1 | - | - | 0487 288 881 | Circuit board | | AP1 |
| 510 | 1 | 1 | 1 | 1 | 0469 378 880 | Terminal Insulation KIT | | XT3 |
| 511 | 1 | 1 | 1 | 1 | 0349 302 338 | Intermediate plate | | |
| 512 | 1 | 1 | 1 | 1 | | Transformer | | TC2 |
| 513 | - | - | 1 | - | 0455 635 001 | Transformer | | TC1 |
| | - | - | - | 1 | 0455 636 001 | Transformer | | TC1 |
| | 1 | - | - | - | 0455 637 001 | Transformer | | TC1 |
| | - | 1 | - | - | 0455 638 001 | Transformer | | TC1 |
| 514 | 1 | 1 | 1 | 1 | 0193 298 101 | Bracket | | |
| 515 | - | - | 1 | - | 0193 297 103 | Contactora | | KM1 |
| | - | 1 | - | 1 | 0193 502 101 | Contactora | | KM1 |
| | 1 | - | - | - | 0193 922 001 | Contactora | | KM1 |
| 516 | - | - | 1 | 1 | 0162 781 002 | Terminal | 1/4 | |
| 517 | 1 | 1 | 1 | 1 | 0456 185 002 | Cover | | |
| 518 | 1 | 1 | 1 | 1 | 0349 483 648 | Gas valve | | YV1 |



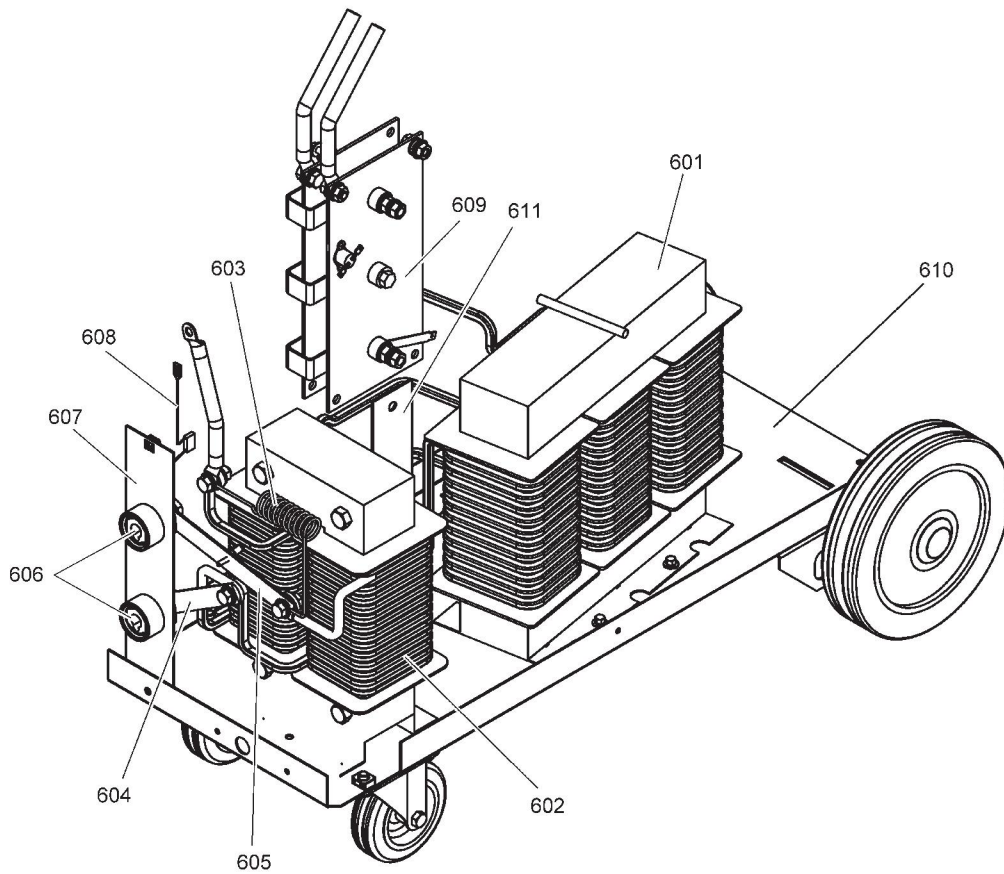
C = Component designation in the circuit diagram

| Item | Qty C280 | Qty C340 | Ordering no. | Denomination | Notes | C |
|------|----------|----------|--------------|------------------|---|-------------|
| 601 | - | 1 | 0349 302 344 | Transformer | | TM1 |
| 601a | - | 1 | 0349 483 724 | Thermal switch | Mounted on middle column of transformer | ST2 |
| 602 | - | 1 | 0455 328 880 | Inductor | | L1 |
| 603 | - | 1 | 0349 302 349 | Resistor | | R1 |
| 604 | - | 1 | 0349 492 823 | Rail | | |
| 605 | - | 1 | 0349 492 824 | Rail | | |
| 606 | 2 | 2 | 0160 362 881 | Current terminal | | XS1, XS2 |
| 607 | 1 | 1 | 0349 302 348 | Plate | | |
| 608 | 1 | 1 | 0349 302 352 | Capacitor | | C1 |
| 609 | | | | Diode bridge | | V1-V6 |
| | - | 1 | 0349 302 346 | | Valid up to serial no: xxx-041-xxxx | |
| | - | 1 | 0349 311 925 | | Valid from serial no: xxx-042-xxxx | |
| 610 | 1 | 1 | 0349 302 317 | Bottom plate | | |
| 611 | 1 | 1 | 0349 302 354 | Bracket | | |
| 612 | 1 | - | 0349 302 393 | Transformer | | TM1 |
| 612a | 1 | - | 0349 483 720 | Thermal switch | Mounted on middle column of transformer | ST2 |
| 613 | 1 | - | 0349 302 600 | Inductor | | L1 |
| 614 | 1 | - | 0349 486 126 | Resistor | | R1 |
| 615 | 1 | - | 0349 302 382 | Diode bridge | | V1-V6 |

Mig C280 PRO



Mig C340 PRO

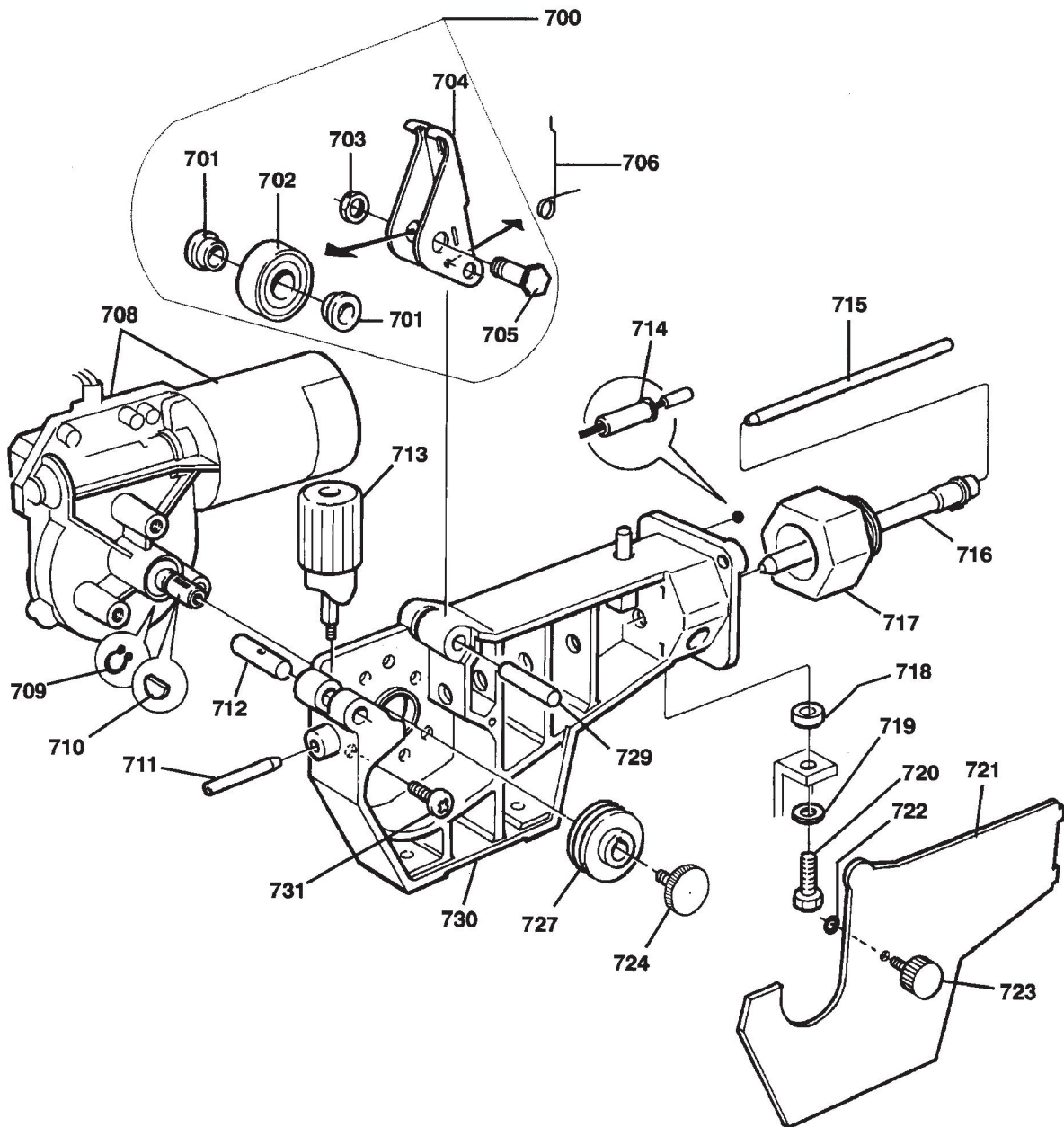


C = Component designation in the circuit diagram

| Item | Qty C340 | Ordering no. | Denomination | Notes | C |
|------|----------|--------------|---------------------|---|----|
| - | 1 | 0455 890 888 | Wire feed mechanism | | |
| 700 | 1 | 0367 529 001 | Pressure arm | | |
| 701 | 2 | 0455 906 001 | Spacer sleeve | | |
| 702 | 1 | 0455 907 001 | Pressure roller | | |
| 703 | 1 | | Nut | SGA D8 | |
| 704 | 1 | | Holder | | |
| 705 | 1 | | Shaft | | |
| 706 | 1 | 0455 896 001 | Spring | | |
| 708 | 1 | 0466 489 001 | Drive unit | | M1 |
| 709 | 1 | 0215 701 007 | Locking washer | Included in item 708 | |
| 710 | 1 | 0191 496 114 | Key | Included in item 708 | |
| 711 | 1 | 0466 074 001 | Inlet nozzle | | |
| 712 | 1 | 0367 528 001 | Pin bolt | | |
| 713 | 1 | 0368 749 880 | Pressure transducer | | |
| 714 | 2 | 0368 750 001 | Insulating sleeve | | |
| 715a | 1 | 0455 894 001 | Insert tube | Plastic, must be used together with item 716a. For welding with Al wire | |
| 715b | 1 | 0455 889 001 | Insert tube | Steel, must be used together with item 716b. | |
| 716a | 1 | 0455 885 001 | Outlet nozzle | Must be used together with item 715a. For welding with Al wire | |
| 716b | 1 | 0455 886 001 | Outlet nozzle | Must be used together with item 715b | |
| 717 | 1 | 0455 882 001 | Current sleeve | | |
| 718 | 1 | 0455 883 001 | Spacer sleeve | Ø 16/8.2×0.9 | |
| 719 | 1 | | Washer | Ø 16/8.4×1.5 | |
| 720 | 1 | | Screw | M8×20 | |
| 721 | 1 | 0455 881 001 | Protection plate | | |
| 722 | 1 | 0215 201 202 | O-ring | | |
| 723 | 1 | | Screw | M5×12 | |
| 724 | 1 | 0349 308 502 | Screw | M4×10 | |
| 727 | 1 | 0367 556 001 | Feed roller | Ø 0.6–0.8 mm (0.023–0.031 in.) Fe, Ss, cored wire | |
| | 1 | 0367 556 002 | Feed roller | Ø 0.8–1.0 mm (0.031–0.039 in.) Fe, Ss, cored wire | |
| | 1 | 0367 556 006 | Feed roller | Ø 1.0–1.2 mm (0.039–0.047 in.) cored wire | |
| | 1 | 0367 556 004 | Feed roller | Ø 1.0–1.2 mm (0.039–0.047 in.) Al wire | |

SPARE PARTS

| Item | Qty C340 | Ordering no. | Denomination | Notes | C |
|------|----------|--------------|--------------|-------|---|
| 729 | 1 | 0455 893 001 | Shaft | | |
| 730 | 1 | 0455 884 001 | Gear housing | | |
| 731 | 3 | | Screw | M6×16 | |

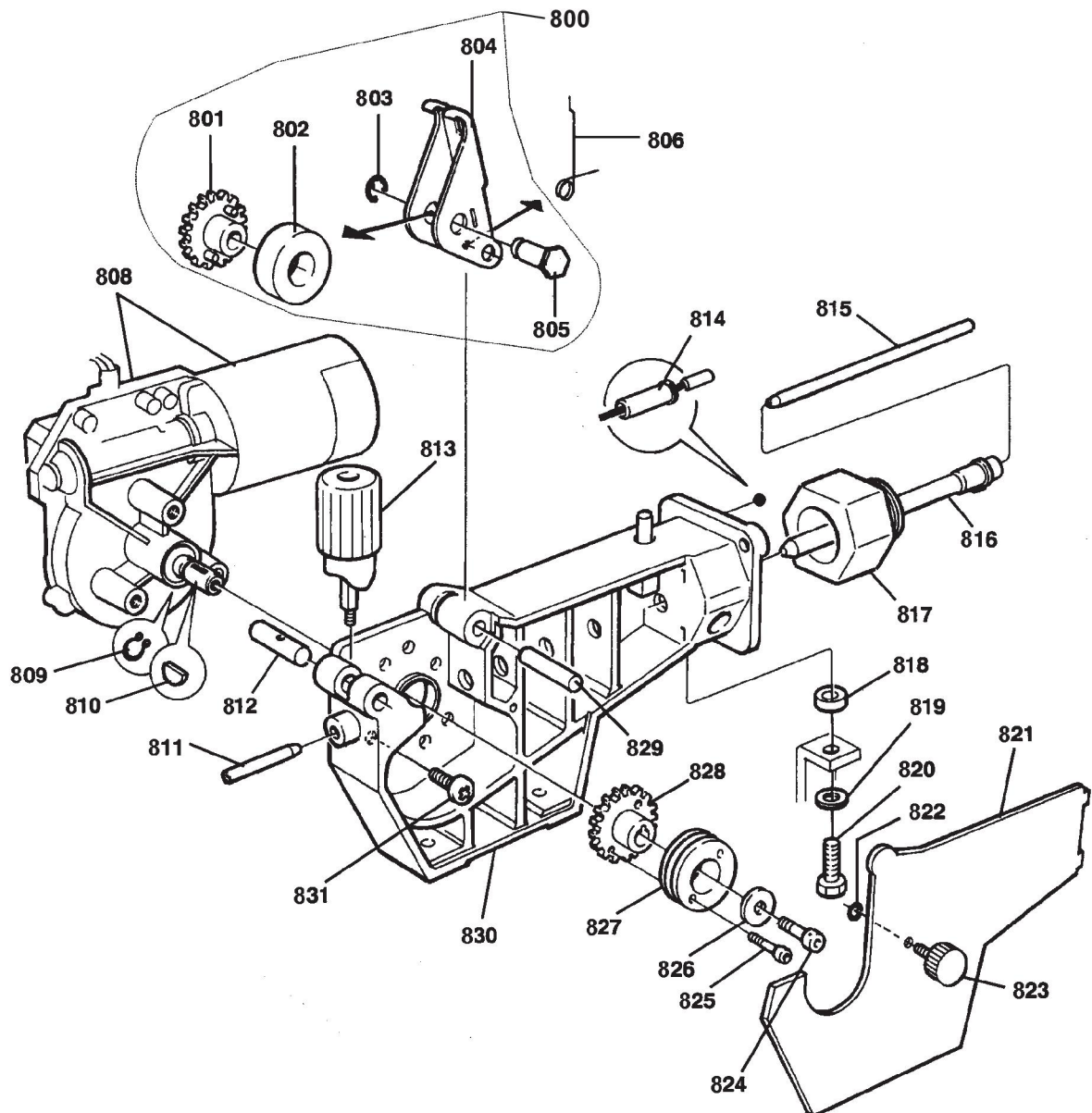


C = Component designation in the circuit diagram

| Item | Qty | Ordering no. | Denomination | Notes | C |
|------|-----|--------------|----------------------------|--|--------|
| - | 1 | 0455 890 881 | Wire feed unit | | |
| 800 | 1 | 0469 833 880 | Pressure arm | Complete, contains items 801-805 | |
| 801 | 1 | 0367 907 013 | Gear adapter | | |
| 802 | 1 | 0369 728 001 | Pressure roller | | |
| | 1 | 0466 262 001 | Pressure roller | Knurled | |
| 803 | 1 | | Locking washer | SGA D8 | |
| 804 | 1 | | Holder | | |
| 805 | 1 | | Shaft | | |
| 806 | 1 | 0455 896 001 | Spring | | |
| 808 | 1 | 0455 597 001 | Drive unit with tachometer | | M1, G1 |
| 809 | 1 | 0215 701 007 | Locking washer | Included in item 808 | |
| 810 | 1 | 0191 496 114 | Key | Included in item 808 | |
| 811 | 1 | 0466 074 001 | Inlet nozzle | | |
| 812 | 1 | 0367 528 001 | Pin bolt | | |
| 813 | 1 | 0368 749 880 | Pressure transducer | | |
| 814 | 2 | 0368 750 001 | Insulating sleeve | | |
| 815a | 1 | 0455 894 001 | Insert tube | Plastic, must be used together with item 816a. For welding with Al wire. | |
| 815b | 1 | 0455 889 001 | Insert tube | Steel, must be used together with item 816b. | |
| 816a | 1 | 0455 885 001 | Outlet nozzle | Must be used together with item 815a. For welding with Al wire. | |
| 816b | 1 | 0455 886 001 | Outlet nozzle | Must be used together with item 815b. | |
| 817 | 1 | 0455 882 001 | Current sleeve | | |
| 818 | 1 | 0455 883 001 | Spacer sleeve | Ø 16/8.2×0.9 | |
| 819 | 1 | | Washer | Ø 16/8.4×1.5 | |
| 820 | 1 | | Screw | M8×20 | |
| 821 | 1 | 0455 881 001 | Protection plate | | |
| 822 | 1 | 0215 201 202 | O-ring | | |
| 823 | 1 | | Screw | M5×12 | |
| 824 | 1 | | Screw | M4×12 | |
| 825 | 2 | | Screw | M3×16 | |
| 826 | 1 | 0193 104 002 | Washer | | |

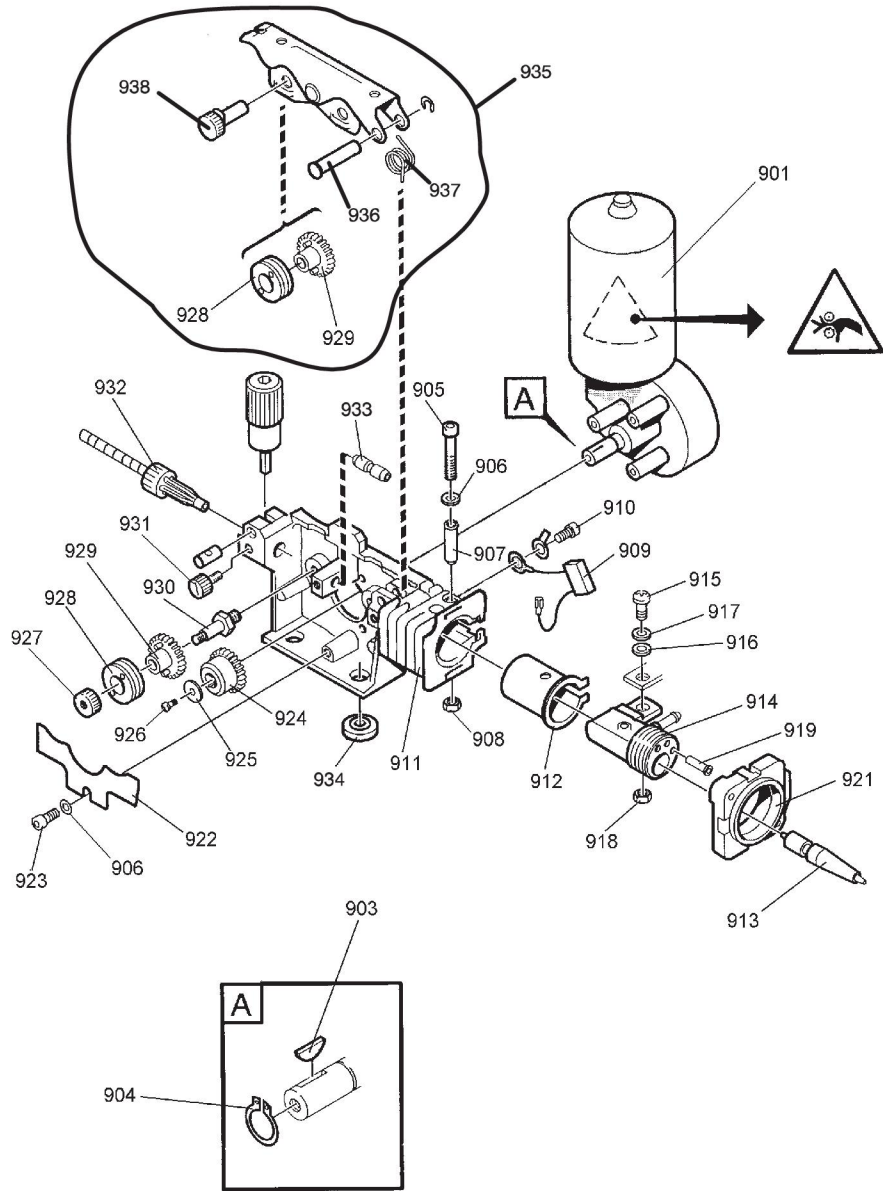
SPARE PARTS

| Item | Qty | Ordering no. | Denomination | Notes | C |
|------|-----|--------------|--------------|---|---|
| 827 | 1 | 0369 557 001 | Feed roller | Ø 0.6–0.8 mm (0.023–0.031 in.) Fe, Ss and cored wire | |
| | 1 | 0369 557 002 | Feed roller | Ø 0.8–1.0 mm (0.031–0.039 in.) Fe, Ss and cored wire | |
| | 1 | 0369 557 003 | Feed roller | Ø 1.0–1.2 mm (0.039–0.047 in.) Fe, Ss and cored wire | |
| | 1 | 0369 557 004 | Feed roller | Ø 1.0–1.2 mm (0.039–0.047 in.) & Ø 1.4–1.6 mm (0.055–0.063 in.) cored wire, knurled | |
| | 1 | 0369 557 006 | Feed roller | Ø 1.0–1.2 mm (0.039–0.047 in.) Al wire | |
| 828 | 1 | 0369 716 001 | Gear adapter | | |
| 829 | 1 | 0455 893 001 | Shaft | | |
| 830 | 1 | 0455 884 001 | Gear housing | | |
| 831 | 3 | | Screw | M6×16 | |



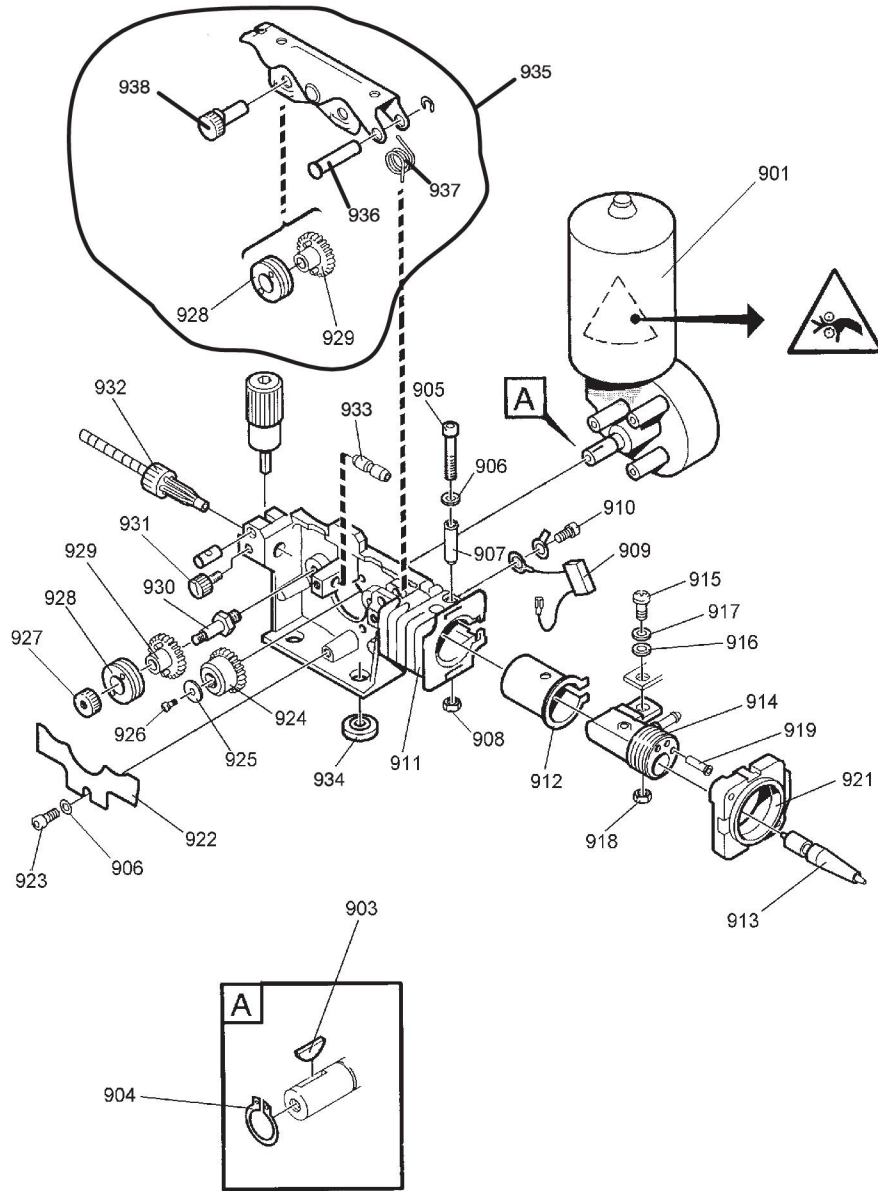
C = Component designation in the circuit diagram

| Item | Qty C280 | Qty C340 | Ordering no. | Denomination | Notes | C |
|------|-------------|-------------|--------------|---------------------|---|----|
| | - | 1 | 0459 000 883 | Wire feed mechanism | | |
| | 1 | - | 0459 000 884 | Wire feed mechanism | | |
| 901 | - | 1 | 0455 597 001 | Drive unit | | M1 |
| | 1 | - | 0466 489 001 | Drive unit | | M1 |
| | 1 | 1 | 0193 498 104 | Connector | | |
| | 1 | 1 | 0193 260 063 | Connector | | |
| 903 | 1 | 1 | 0191 496 114 | Key | Included in item 901 | |
| 904 | 1 | 1 | 0215 701 007 | Locking washer | Included in item 901 | |
| 905 | 1 | 1 | | Screw | M6×40 | |
| 906 | 2 | 2 | | Washer | Ø 12/6,4×1,5 | |
| 907 | 1 | 1 | 0455 048 001 | Insulating tube | | |
| 908 | 1 | 1 | | Nut | M6 | |
| 909 | 1 | 1 | 0467 911 880 | Capacitor | | C3 |
| 910 | 4 | 4 | | Screw | M6×12 | |
| 911 | 1 | 1 | 0455 046 003 | Gear housing | | |
| 912 | 1 | 1 | 0455 045 001 | Insulating sleeve | | |
| 913 | 1 | 1 | 0469 837 880 | Outlet nozzle | Ø 2.0 mm (0.079 in.) steel for 0.6–1.6 mm wire (0.024–0.063 in.) | |
| | 1 | 1 | | Outlet nozzle | Ø 2.0 mm (0.079 in.) plastic for 0.8–1.6 mm (0.031–0.063 in.) Al wire | |
| 914 | 1 | 1 | 0455 044 001 | Current connection | | |
| 915 | 1 | 1 | | Screw | M8×25 | |
| 916 | 1 | 1 | | Washer | Ø 16/8,4×1,5 | |
| 917 | 1 | 1 | | Spring washer | Ø 16/8,2×0,9 | |
| 918 | 1 | 1 | | Nut | M8 | |
| 919 | 2 | 2 | 0368 750 001 | Insulating sleeve | | |
| 921 | 1 | 1 | 0455 047 001 | Front flange | | |
| 922 | 1 | 1 | 0469 838 001 | Cover | | |
| 923 | 3 | 3 | | Screw | M6×12 | |
| 924 | 1 | 1 | 0455 052 001 | Drive gear | | |
| 925 | 1 | 1 | | Washer | Ø 16/5×1M4×12 | |
| 926 | 1 | 1 | | Screw | | |
| 927 | 2 | 2 | 0458 721 001 | Locking nut | | |



SPARE PARTS

| Item | Qty C280 | Qty C340 | Ordering no. | Denomination | Notes | C |
|------|-------------|-------------|--------------|-----------------------|--|---|
| 928 | 4 | 4 | 0459 052 002 | Feed/pressure roller | Ø 0.8–1.0 mm (0.031–0.039 in.) Fe, Ss, Al, cored wire | |
| | 4 | 4 | 0459 052 003 | Feed/pressure roller | Ø 1.0–1.2 mm (0.039–0.047 in.) Fe, Ss, Al, cored wire | |
| | 4 | 4 | 0458 825 001 | Feed/pressure roller | Ø 1.0–1.2 mm (0.039–0.047 in.) V-groove, knurled | |
| | 4 | 4 | 0458 825 002 | Feed/pressure roller | Ø 1.2–1.4 mm (0.047–0.055 in.) V-groove, knurled | |
| | 4 | 4 | 0458 824 001 | Feed/pressure roller | Ø 0.8–1.0 mm (0.031–0.039 in.) Al wire, U-groove | |
| | 4 | 4 | 0458 824 003 | Feed/pressure roller | Ø 1.2–1.6 mm (0.047–0.063 in.) Al wire, U-groove | |
| 929 | 4 | 4 | 0455 053 880 | Gear adapter | | |
| 930 | 2 | 2 | 0458 722 001 | Feed roll axle | | |
| 931 | 3 | 3 | 0458 689 001 | Nozzle screw | | |
| 932 | 1 | 1 | 0455 049 001 | Inlet nozzle | Ø 3.0 mm (0.118 in.) plastic for 0.6–1.6 mm (0.024–0.063 in.) Fe, Ss, Al, cored wire | |
| | 1 | 1 | 0332 318 001 | Inlet nozzle | Ø 2.4 mm (0.094 in.) steel | |
| 933 | 1 | 1 | 0455 072 002 | Intermediate nozzle | | |
| | 1 | 1 | 0456 615 001 | Intermediate nozzle | Al | |
| 934 | 4 | 4 | 0153 043 002 | Insulating washer | | |
| 935 | 1 | 1 | 0459 001 880 | Pressure arm complete | | |
| 936 | 1 | 1 | 0458 997 001 | Shaft | | |
| 937 | 1 | 1 | 0458 993 001 | Torsion spring | | |
| 938 | 2 | 2 | 0458 999 001 | Shaft | | |

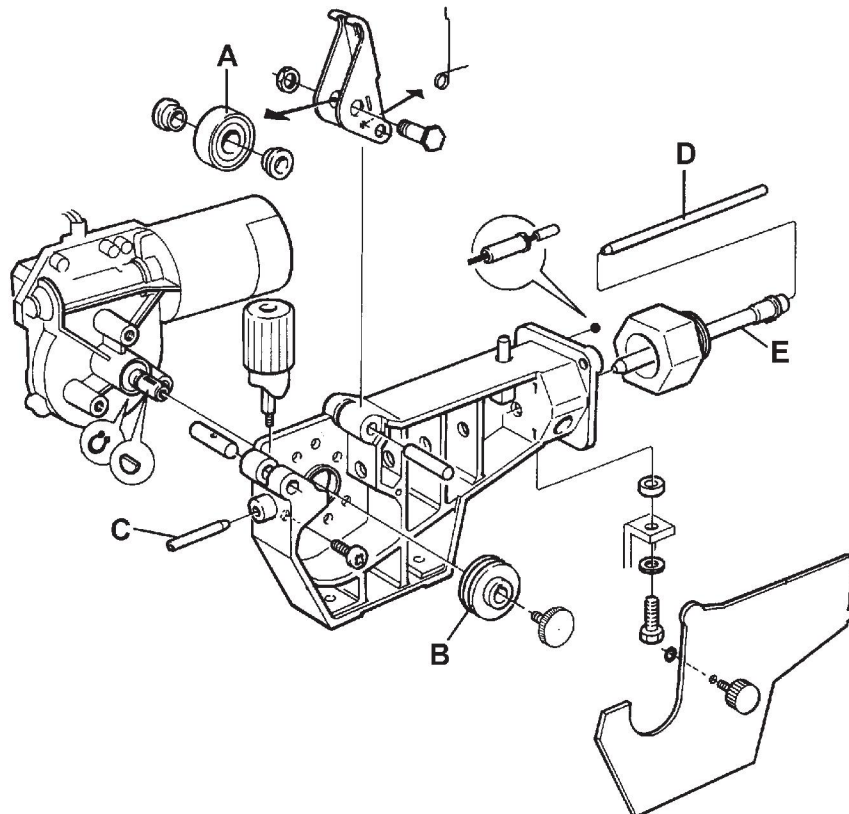


WEAR PARTS

(W. F. Mechanism 0455 890 888)

| Item | Denomination | Ordering no. | Notes |
|------|-----------------|--------------|--|
| A | Pressure roller | 0455 907 001 | |
| B | Feed roller | 0367 556 001 | Ø 0.6–0.8 mm (0.024–0.031 in.) Fe, Ss, cored wire. |
| | | 0367 556 002 | Ø 0.8–1.0 mm (0.031–0.039 in.) Fe, Ss, cored wire. |
| | | 0367 556 006 | Ø 1.0–1.2 mm (0.039–0.047 in.) cored wire. |
| | | 0367 556 004 | Ø 1.0–1.2 mm (0.039–0.047 in.) Al wire. |
| C | Inlet nozzle | 0466 074 001 | |
| D | Insert tube | 0455 894 001 | Plastic, must be used together with item 0455 885 001, for welding with Al wire. |
| | | 0455 889 001 | Steel, must be used together with item 0455 886 001. |
| E | Outlet nozzle | 0455 885 001 | Must be used together with item 0455 894 001, for welding with Al wire. |
| | | 0455 886 001 | Must be used together with item 0455 889 001. |

The rollers are marked with wire dimension in mm, some are also marked with inch.

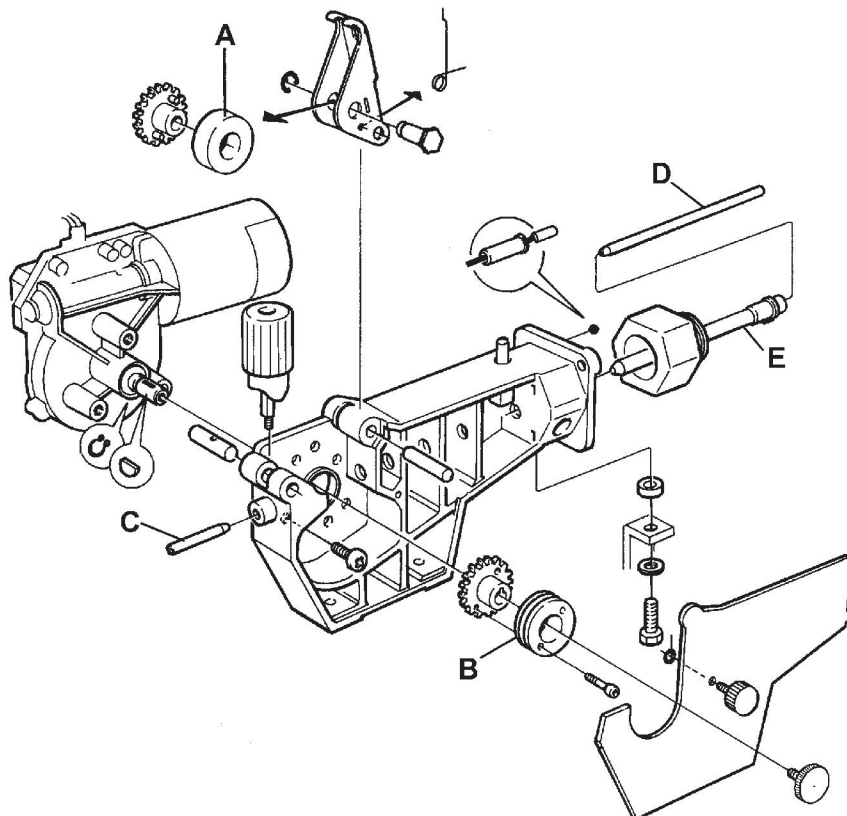
**Welding with aluminium wires.**

In order to weld with aluminium wires, proper rollers, nozzles and liners for aluminium wires **MUST** be used. It is recommended to use 3 m long welding gun for aluminium wires, equipped with appropriate wear parts.

(W. F. Mechanism 0455 890 881)

| Item | Denomination | Ordering no. | Notes |
|------|-----------------|--------------|--|
| A | Pressure roller | 0369 728 001 | |
| | | 0466 262 001 | Knurled |
| B | Feed roller | 0369 557 001 | Ø 0.6–0.8 mm (0.024–0.031 in.) Fe, Ss, cored wire. |
| | | 0369 557 002 | Ø 0.8–1.0 mm (0.031–0.039 in.) Fe, Ss, cored wire. |
| | | 0369 557 003 | Ø 1.0–1.2 mm (0.039–0.047 in.) Fe, Ss, cored wire. |
| | | 0369 557 004 | Ø 1.0–1.2 mm (0.039–0.047 in.) cored wire, knurled. |
| | | 0369 557 006 | Ø 1.0–1.2 mm (0.039–0.047 in.) Al wire. |
| C | Inlet nozzle | 0466 074 001 | |
| D | Insert tube | 0455 894 001 | Plastic, must be used together with item 0455 885 001, for welding with Al wire. |
| | | 0455 889 001 | Steel, must be used together with item 0455 886 001. |
| E | Outlet nozzle | 0455 885 001 | Must be used together with item 0455 894 001, for welding with Al wire. |
| | | 0455 886 001 | Must be used together with item 0455 889 001. |

The rollers are marked with wire dimension in mm, some are also marked with inch.

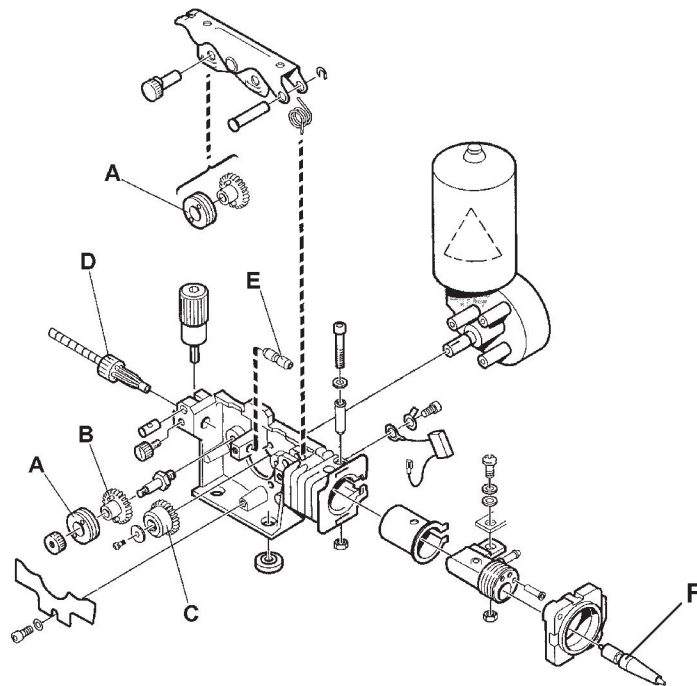
**Welding with aluminium wires.**

In order to weld with aluminium wires, proper rollers, nozzles and liners for aluminium wires **MUST** be used. It is recommended to use 3 m long welding gun for aluminium wires, equipped with appropriate wear parts.

(W. F. Mechanisms 0459 000 883 & 0459 000 884)

| Item | Denomination | Ordering no. | Notes |
|------|------------------------|--------------|---|
| A | Feed / Pressure roller | 0459 052 002 | Ø 0.8–1.0 mm (0.031–0.039 in.) Fe, Ss & cored wire; V-groove |
| | | 0459 052 003 | Ø 1.0–1.2 mm (0.039–0.047 in.) Fe, Ss & cored wire; V-groove |
| | | 0458 825 001 | Ø 1.0–1.2 mm (0.039–0.047 in.) V-groove, knurled. |
| | | 0458 825 002 | Ø 1.2–1.4 mm (0.047–0.055 in.) V-groove, knurled |
| | | 0458 824 001 | Ø 0.8–1.0 mm (0.031–0.039 in.) Al wire, U-groove. |
| | | 0458 824 002 | Ø 1.0–1.2 mm (0.039–0.047 in.) Al wire, U-groove. |
| | | 0458 824 003 | Ø 1.2–1.6 mm (0.047–0.063 in.) Al wire, U-groove. |
| B | Gear adapter | 0455 053 880 | |
| C | Drive gear | 0455 052 001 | |
| D | Inlet nozzle | 0455 049 001 | Ø 3.0 mm (0.118 in.) plastic for 0.6–1.6 mm (0.024–0.063 in.) Fe, Ss, AL, cored wire. |
| | | 0466 074 001 | Ø 2.4 mm (0.094 in.) steel. |
| E | Intermediate nozzle | 0455 894 001 | Al wire. |
| | | 0332 318 001 | |
| F | Outlet nozzle | 0455 885 001 | Ø 2.0 mm (0.079 in.) steel for 0.6–1.6 mm (0.024–0.063 in.) wire. |
| | | 0455 885 001 | Ø 2.0 mm (0.079 in.) plastic for 0.8–1.6 mm (0.031–0.063 in.) Al wire. |

The rollers are marked with wire dimension in mm, some are also marked with inch.

**Welding with aluminium wires.**

In order to weld with aluminium wires, proper rollers, nozzles and liners for aluminium wires MUST be used. It is recommended to use 3 m long welding gun for aluminium wires, equipped with appropriate wear parts.

ESAB subsidiaries and representative offices

Europe

AUSTRIA

ESAB Ges.m.b.H
Vienna-Liesing
Tel: +43 1 888 25 11
Fax: +43 1 888 25 11 85

BELGIUM

S.A. ESAB N.V.
Heist-op-den-Berg
Tel: +32 15 25 79 30
Fax: +32 15 25 79 44

BULGARIA

ESAB Kft Representative Office
Sofia
Tel: +359 2 974 42 88
Fax: +359 2 974 42 88

THE CZECH REPUBLIC

ESAB VAMBERK s.r.o.
Vamberk
Tel: +420 2 819 40 885
Fax: +420 2 819 40 120

DENMARK

Aktieselskabet ESAB
Herlev
Tel: +45 36 30 01 11
Fax: +45 36 30 40 03

FINLAND

ESAB Oy
Helsinki
Tel: +358 9 547 761
Fax: +358 9 547 77 71

GREAT BRITAIN

ESAB Group (UK) Ltd
Waltham Cross
Tel: +44 1992 76 85 15
Fax: +44 1992 71 58 03

ESAB Automation Ltd
Andover

Tel: +44 1264 33 22 33
Fax: +44 1264 33 20 74

FRANCE

ESAB France S.A.
Cergy Pontoise
Tel: +33 1 30 75 55 00
Fax: +33 1 30 75 55 24

GERMANY

ESAB Welding & Cutting GmbH
Langenfeld
Tel: +49 2173 3945-0
Fax: +49 2173 3945-218

HUNGARY

ESAB Kft
Budapest
Tel: +36 1 20 44 182
Fax: +36 1 20 44 186

ITALY

ESAB Saldatura S.p.A.
Bareggio (Mi)
Tel: +39 02 97 96 8.1
Fax: +39 02 97 96 87 01

THE NETHERLANDS

ESAB Nederland B.V.
Amersfoort
Tel: +31 33 422 35 55
Fax: +31 33 422 35 44

NORWAY

AS ESAB
Larvik
Tel: +47 33 12 10 00
Fax: +47 33 11 52 03

POLAND

ESAB Sp.zo.o.
Katowice
Tel: +48 32 351 11 00
Fax: +48 32 351 11 20

PORTUGAL

ESAB Lda
Lisbon
Tel: +351 8 310 960
Fax: +351 1 859 1277

ROMANIA

ESAB Romania Trading SRL
Bucharest
Tel: +40 316 900 600
Fax: +40 316 900 601

RUSSIA

LLC ESAB
Moscow
Tel: +7 (495) 663 20 08
Fax: +7 (495) 663 20 09

SLOVAKIA

ESAB Slovakia s.r.o.
Bratislava
Tel: +421 7 44 88 24 26
Fax: +421 7 44 88 87 41

SPAIN

ESAB Ibérica S.A.
San Fernando de Henares
(MADRID)
Tel: +34 91 878 3600
Fax: +34 91 802 3461

SWEDEN

ESAB Sverige AB
Gothenburg
Tel: +46 31 50 95 00
Fax: +46 31 50 92 22

ESAB International AB

Gothenburg
Tel: +46 31 50 90 00
Fax: +46 31 50 93 60

SWITZERLAND

ESAB Europe GmbH
Baar
Tel: +41 1 741 25 25
Fax: +41 1 740 30 55

UKRAINE

ESAB Ukraine LLC
Kiev
Tel: +38 (044) 501 23 24
Fax: +38 (044) 575 21 88

North and South America

ARGENTINA

CONARCO
Buenos Aires
Tel: +54 11 4 753 4039
Fax: +54 11 4 753 6313

BRAZIL

ESAB S.A.
Contagem-MG
Tel: +55 31 2191 4333
Fax: +55 31 2191 4440

CANADA

ESAB Group Canada Inc.
Mississauga, Ontario
Tel: +1 905 670 0220
Fax: +1 905 670 4879

MEXICO

ESAB Mexico S.A.
Monterrey
Tel: +52 8 350 5959
Fax: +52 8 350 7554

USA

ESAB Welding & Cutting
Products
Florence, SC
Tel: +1 843 669 4411
Fax: +1 843 664 5748

Asia/Pacific

AUSTRALIA

ESAB South Pacific
Archerfield BC QLD 4108
Tel: +61 1300 372 228
Fax: +61 7 3711 2328

CHINA

Shanghai ESAB A/P
Shanghai
Tel: +86 21 2326 3000
Fax: +86 21 6566 6622

INDIA

ESAB India Ltd
Calcutta
Tel: +91 33 478 45 17
Fax: +91 33 468 18 80

INDONESIA

P.T. ESABindo Pratama
Jakarta
Tel: +62 21 460 0188
Fax: +62 21 461 2929

JAPAN

ESAB Japan
Tokyo
Tel: +81 45 670 7073
Fax: +81 45 670 7001

MALAYSIA

ESAB (Malaysia) Snd Bhd
USJ
Tel: +603 8023 7835
Fax: +603 8023 0225

SINGAPORE

ESAB Asia/Pacific Pte Ltd
Singapore
Tel: +65 6861 43 22
Fax: +65 6861 31 95

SOUTH KOREA

ESAB SeAH Corporation
Kyungnam
Tel: +82 55 269 8170
Fax: +82 55 289 8864

UNITED ARAB EMIRATES

ESAB Middle East FZE
Dubai
Tel: +971 4 887 21 11
Fax: +971 4 887 22 63

Africa

EGYPT

ESAB Egypt
Dokki-Cairo
Tel: +20 2 390 96 69
Fax: +20 2 393 32 13

SOUTH AFRICA

ESAB Africa Welding & Cutting
Ltd
Durbanville 7570 - Cape Town
Tel: +27 (0)21 975 8924

Distributors

For addresses and phone numbers to our distributors in other countries, please visit our home page

www.esab.com



www.esab.com

